

MX7

Portable Ultrasound System

Lighten Up Infinite Possibilities

MX7 represents the new portable ultrasound based on Mindray's pioneering virtual beamforming technology, ZONE Sonography® Technology (ZST+). With its excellent image quality and compact design, MX7 enables a wide range of ultrasound exams for clinical professionals. A slight profile combined with advanced battery solution offers a high degree of mobility and portability to improve the diagnostic efficiency.

ZONE Sonography® Technology Plus (ZST+):

The Channel Data based ZST+ delivers multiple imaging advances:
Advanced Acoustic Acquisition, Dynamic Pixel Focusing

Advanced processing algorithm

- HD Scope - By processing channel data multiply and retrospectively, HD Scope can improve the detail information and image contrast on specific area maximally
- Echo Boost - A technique specifically designed to optimize and enhance myocardial tissue
- HR Flow - Effectively improve the dynamics of blood flow

Slight profile design

- 3kg and 44mm - Ultra-light and thin portable ultrasound system
- High mobility and flexibility

Advanced battery solution

- Super-long battery duration of up to 8 hours scanning with U-Bank

Completed transducer set



Convex

Linear



Sector

Endocavity



mindray

MX7

Portable Ultrasound System

Lighten Up Infinite Possibilities

Advanced diagnostic capability

- UWN+ (Ultra-Wideband Non-linear) CEUS
- Natural Touch Elastography
- iNeedle+
- LVO (Left ventricle Opacification)
- Auto EF

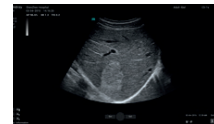
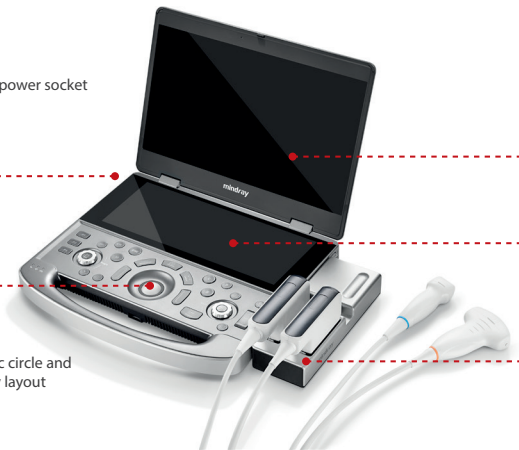
Ergonomic Features



Magnetic power socket



Concentric circle and Symmetry layout

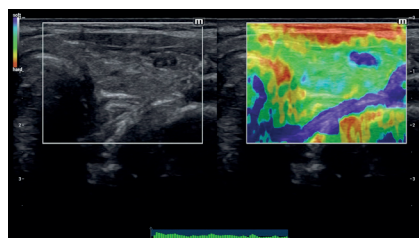
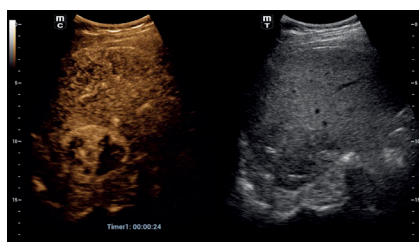


15.6-inch IPS Main Screen
Super large image size



Fully customized touch screen

Probe extender
Support two probes



rear view

Cable management for organized and efficient procedures

Anti-collision design of transducer holder and rear handle for main unit

320mm lifting range for flexible height adjustment

Innovative storage design provides ample storage space for cleaning and disinfection supplies

"X" ultra-small chassis allows flexibility in small space

Shock absorber casters reduce the effect of moving over rough ground

mindray