

**mindray**

## DC-60 Exp

Diagnostic Ultrasound System

# An all-around partner to trust

X-Insight



# X-Insight

## An insightful solution to envision more.

Mindray's brand-new solution is an excellent fusion of continuous customer insights into clinical needs, combined with continually evolving cutting-edge ultrasound technologies.


Full of vitality, with the goal of insight into the future and pursuit of the infinity, it is constantly improving with increased scalability.

## High efficiency with precision imaging

As an all-around partner, DC-60 Exp with X-Insight devotes to provide a comprehensive solution to help you manage all-aspect daily clinical practice with ease and certainty.

Based on the deep insights of customer needs, the DC-60 Exp with X-Insight is designed to deliver high efficiency with precision imaging, which is empowered by eXpress Clarity, eXceptional Intelligence and eXceeding Experience :

 eXpress Clarity

 eXceptional Intelligence

 eXceeding Experience





# eXpress Clarity

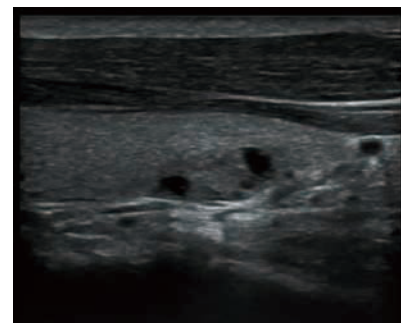
More clarity at hand

To achieve excellent images with minimum effort is your highest priority and our endless pursuit. With continuous innovation in imaging and transducer technologies, the DC-60 Exp with X-Insight delivers immediate clarity with 'Touch and Bingo' to allow you to get the optimum images that you need immediately, as soon as the transducer touches the body.

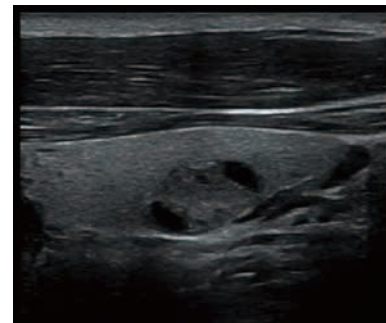
## 'Touch and Bingo' with evolutional transducers

### ComboWave transducers

Compared with traditional transducers, ComboWave transducers utilize a new type of composite piezoelectric material to dramatically optimize the acoustic spectrum and reduce acoustic impedance. Further integrated with Mindray unique 3T technology, the ComboWave linear transducers allow you to experience outstanding performance with extreme image resolution and uniformity in thyroid, breast, vascular, and more.



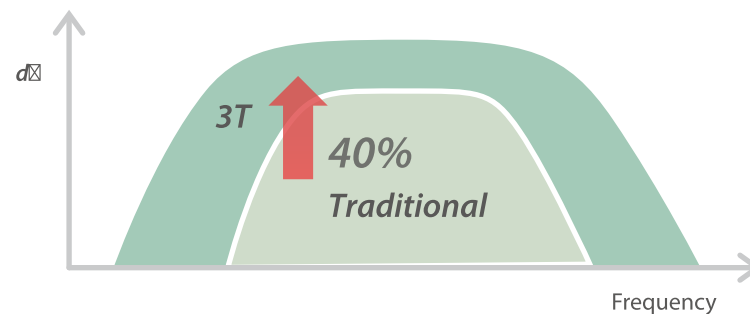
Traditional Linear Image



ComboWave Linear Image

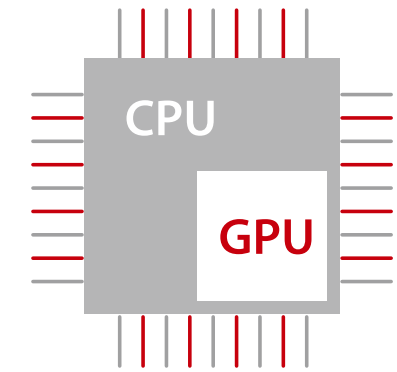
### Optimized transducers with 3T technology

Combining with Mindray unique 3T technology (Triple-matching layers, Total-cut design, Thermal control), the optimized convex, phased array and volume transducers provide a wider range application coverage, resulting in an optimum scanning solution in ABD, Cardiology, OB/GYN and more.



## Thunder-speed imaging powered by X-Engine

The new X-Engine utilizes the evolutionary integration of GPU and CPU to enable multi-core parallel processing for fast imaging. With the advanced imaging engine, the imaging processing speed is accelerated three or four times, resulting in extremely fast imaging for 3D/4D and other applications.



Processing Speed 3X Plus

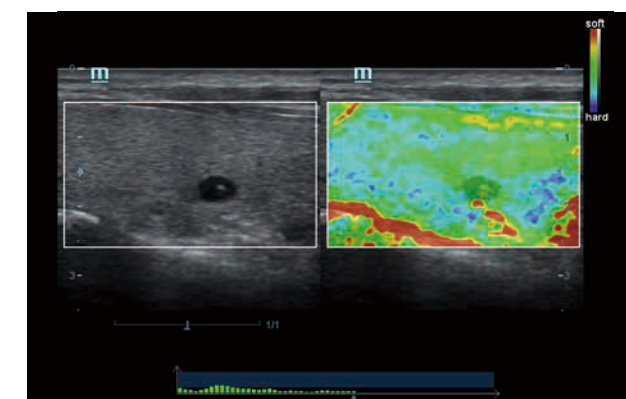
## Ultra-Speed data transmission with security guarantee

By the integration of Solid-State Disk(SSD), DC-60 Exp with X-Insight provides the ultra-speed data transmission capability to accelerate the system operational speed, for instance, faster imaging, quicker boot-up or wake-up. And the SSD is able to extend the data life-time of ultrasound system, which enhances the protection of patient data and privacy guarantee.

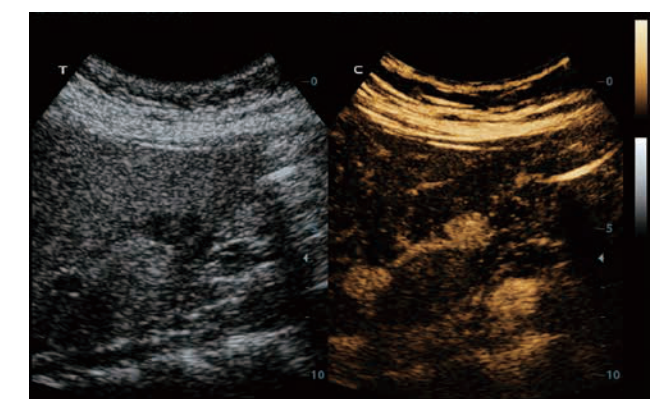


Transmission speed 5X Plus

## Proven advanced applications:

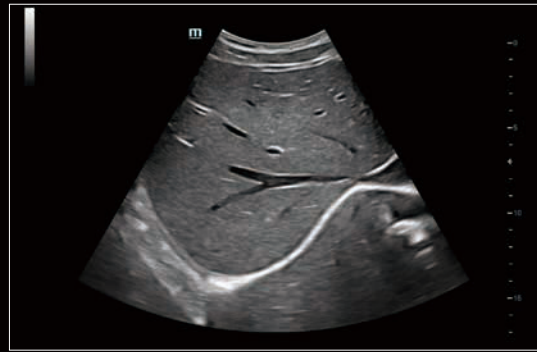


Natural Touch Elastography

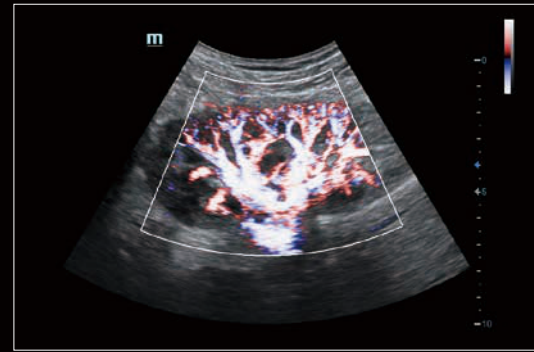


UWN+ (CEUS)

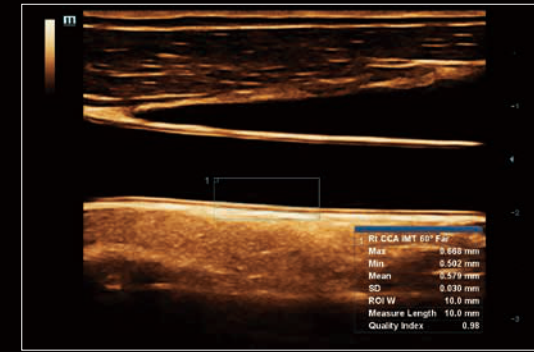
# Image gallery



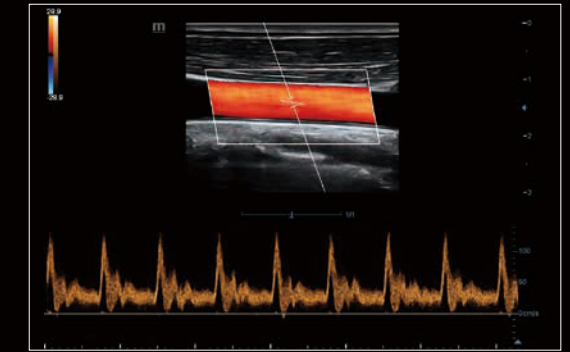
Liver, 2D



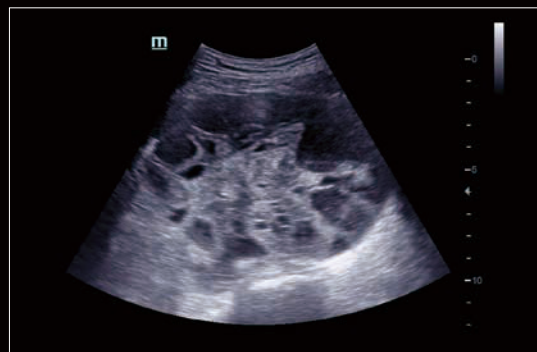
Kidney HR Flow



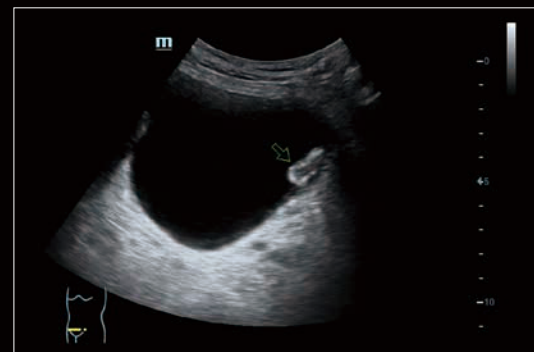
Common Carotid Artery IMT



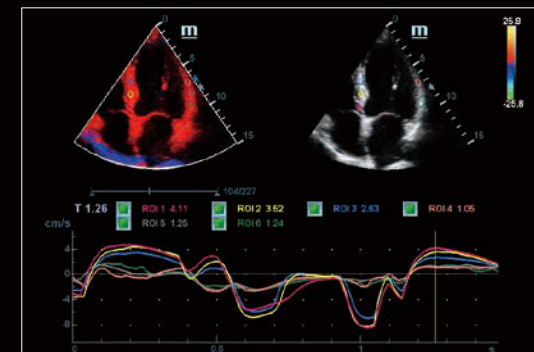
Common Carotid Artery PW



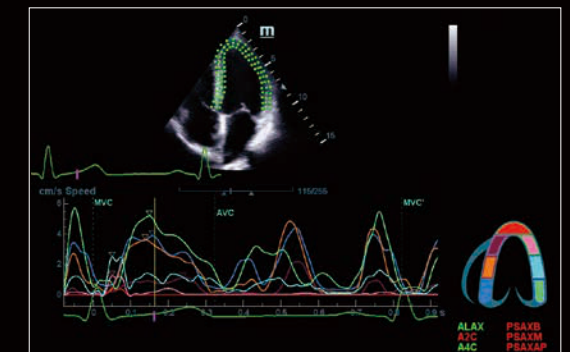
Abdomen Mass



Bladder Mass, 2D



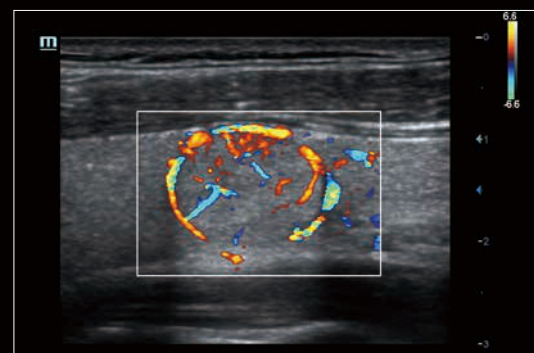
Cardiac TDI QA



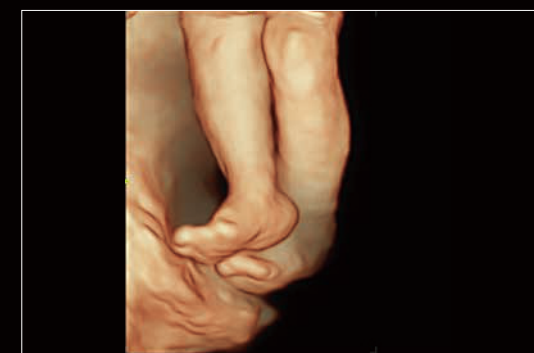
Cardiac TT QA



Thyroid, 2D



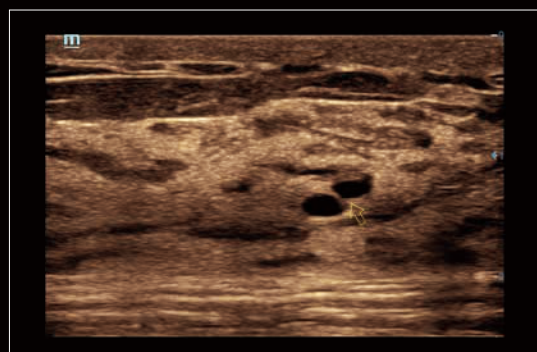
Thyroid Mass CFM



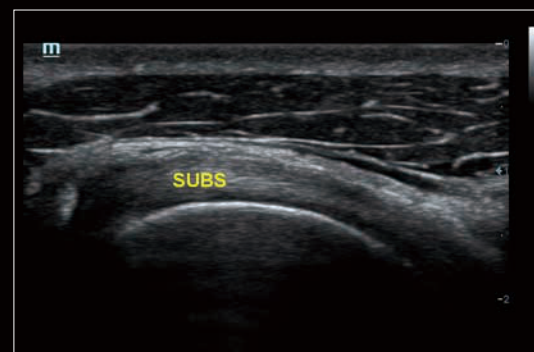
Fetal Leg 3D



Fetal Face iLive



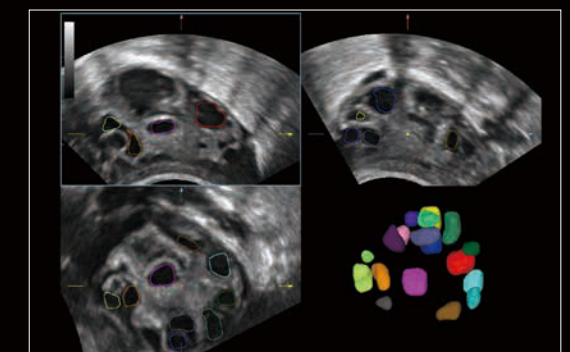
Dilation of Mammary Duct



Subscapular Muscle Tendon



Fetal Heart iLive



Smart Follicle

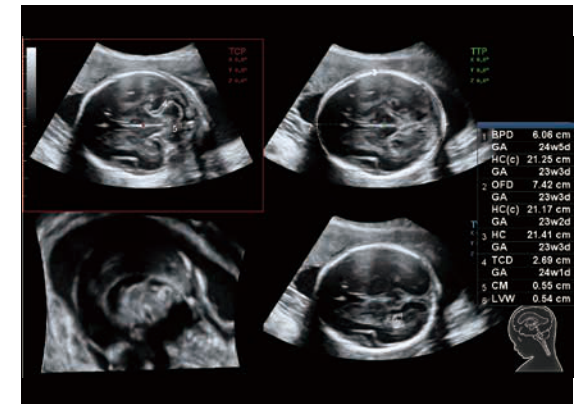




## Smart Planes CNS

More accuracy with smart acquisition

Smart Planes CNS is a user-friendly solution to improve through-put, and reduce user dependency. **With a simple button-click** on a 3D fetal brain volume image, the standard CNS scanning planes (MSP, TCP, TTP and TVP) and a range of related anatomical measurements (BPD, HC, OFD, TCD, CM and LVW) are obtained immediately with high accuracy, which reduces about 90 Second per exam.



Smart Planes CNS

# eXceptional Intelligence

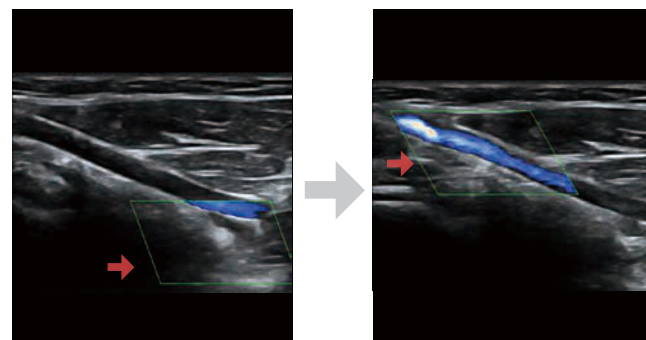
Intelligence through whole exams

To improve scanning efficiency with more accuracy and consistency, the DC-60 Exp with X-Insight provides All-Smart Exams for all kinds of advanced applications, from plane acquisition to image optimization, and from calculation to exam protocol.

## Smart Track

More simplicity with auto image optimization

Smart Track provides fast and intelligent optimization for vascular imaging with simply **one-touch operation**. It can optimize Color, Power and PW spectrum by **self-tracking** and reduce time-consuming steps. Therefore the vascular exam workflow is simplified with an optimal view.

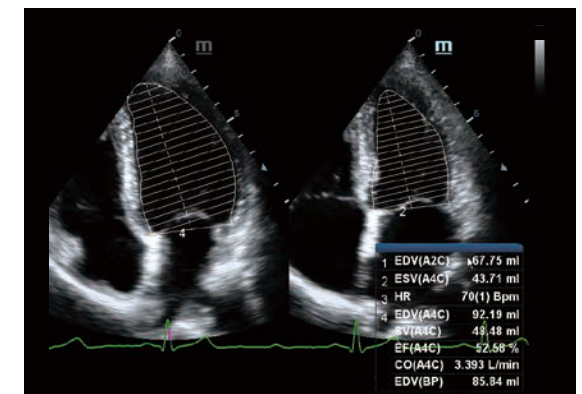


Smart Track

## Auto EF

More productivity with auto calculation

Auto EF is an intelligent way to analyze 2D echo clips to **automatically recognize** diastole & systole frames and **output** a series of measurements to evaluate left ventricle function for more productivity, such as EDV/ESV/EF.

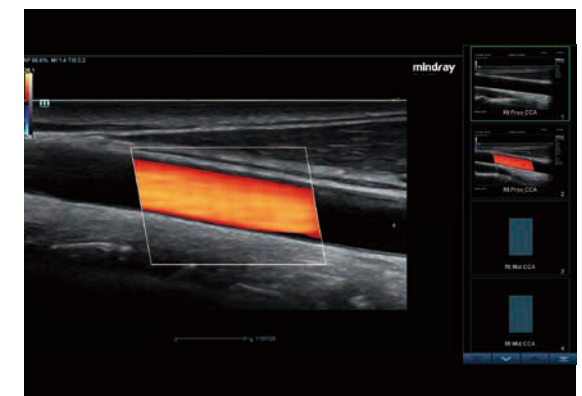


Auto EF

## iWorks

More consistency with exam protocol

iWorks takes advantage of the inbuilt standard scan protocols for more consistency and **reduces the exam time by up to 50%**. The highly flexible and powerful feature is further enhanced with user-defined capabilities.



iWorks

..