

TomoDose™

TomoTherapy® Beam QA Made Easy

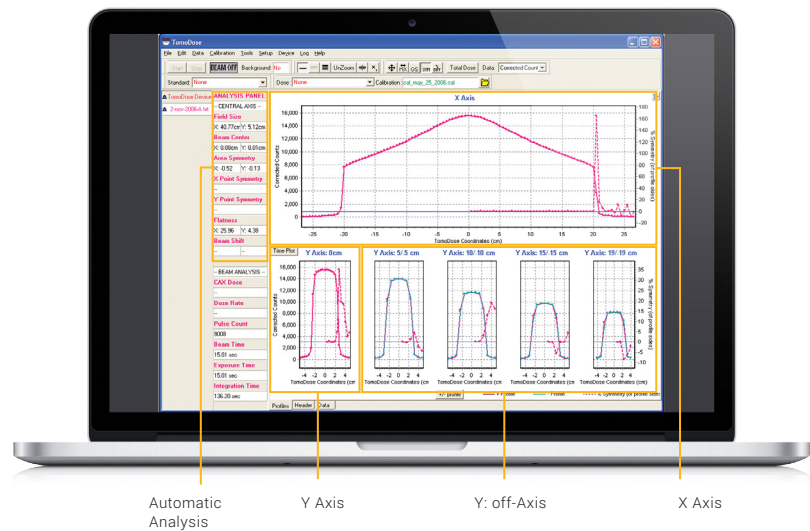
TomoDose is a 2D array for independent quality assurance and trouble-shooting measurements of a TomoTherapy® system. The system provides quick simultaneous full field profile measurements for the Y and X axes and comprehensive beam analysis.



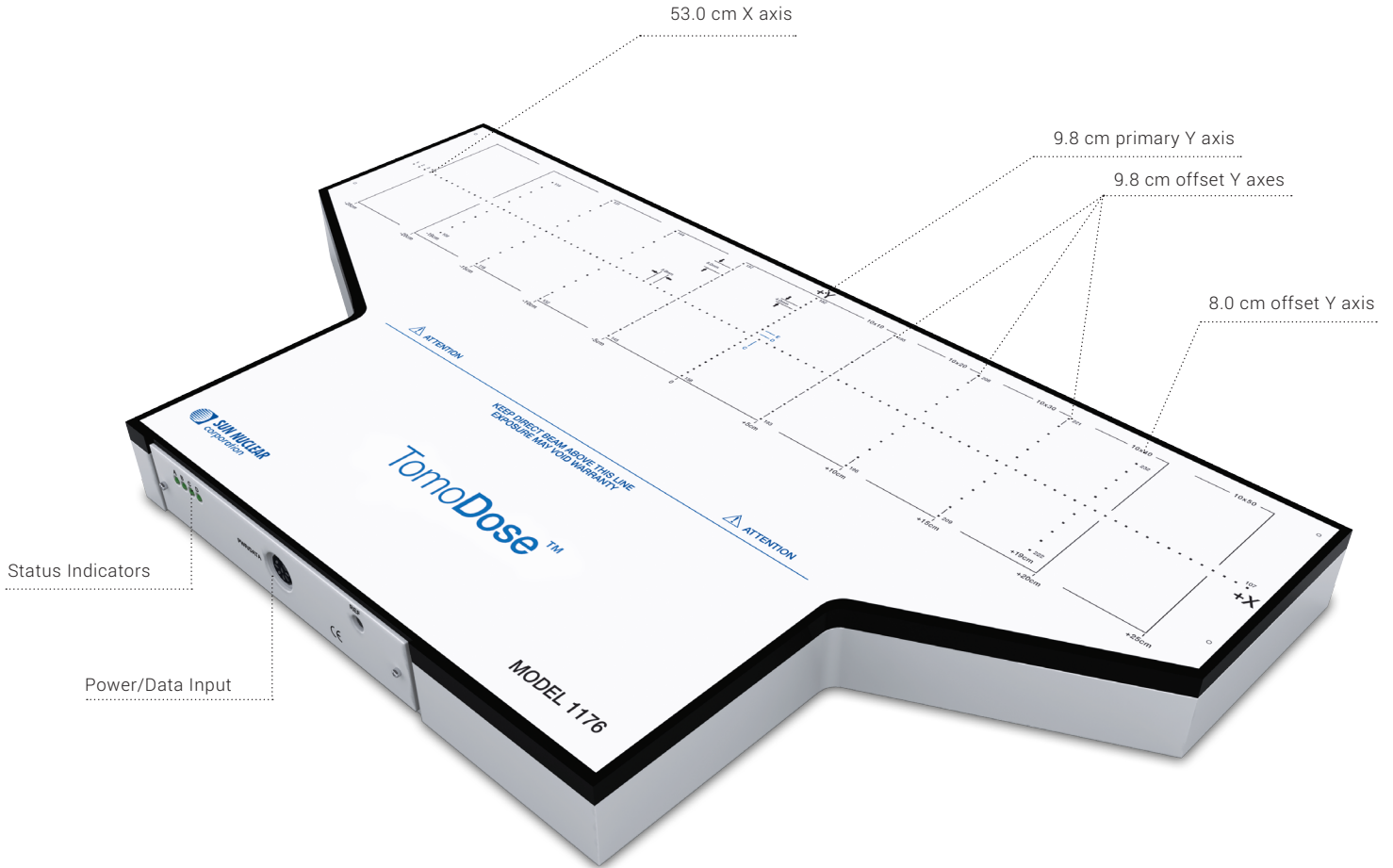
Features and Benefits

- Use for QA on all TomoTherapy systems
 - Routine QA
 - Post component replacement QA
 - Daily QA
- Measure entire Hi-Art beam in a single measurement
 - Single X-axis and nine Y-axis detector arrays (total of 10)
 - Output, symmetry, flatness, field size, penumbra, beam center
 - Instantaneous dose rate
- Only array designed for TomoTherapy Hi-Art
- Accessibility to raw data
- Import water tank data and compare to TomoDose files
- Fast and efficient setup

TomoDose software displaying X and Y Axes



Features



Specifications

Detector Type:	SunPoint Diode Detectors	Detector Volume: (cm ³)	0.000019
Detector Quantity:	223 total on X and Y	Detector Sensitivity: (nC/Gy)	32.0
Detector Spacing: (mm)	X Primary: 5.0 Y Primary: 4.0 Y Offset: 8.0	Detector Stability:	0.5%/kGy at 6MV
Field Size:(cm)	53.0 x 9.8	Maximum Dose Rate Limit: (Gy/min)	56.0
Array Length: (cm)	X: 53.0 Y: 9.8 (8.0 at ±19.0)	Operating System:	Windows 2000, XP 32-bit, or Vista 32-bit
Y Axes Offset: (cm)	±5.0, ±10.0, ±15.0, ±19.0 cm	Dimensions: L/W/H (cm)	25.6 x 52.0 x 6.0
Inherent Backscatter: (g/cm ²)	2.3	Weight: (kg)	5.0
Active Detector Area: (mm ²)	0.64	Number of Connection Cables:	Single power/data cable

